

# WickView

## Moisture Management Tester

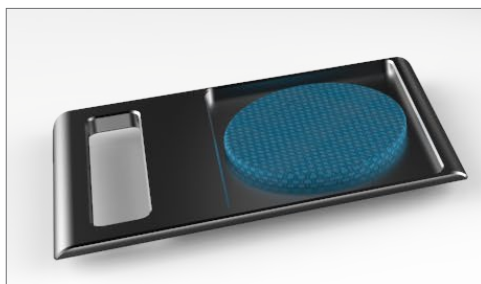
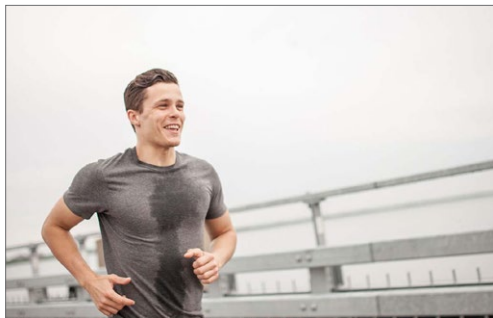
---

WickView is a state-of-the-art instrument that uses an advanced imaging system to track and record the transfer of moisture through a garment, helping to understand its effectiveness at moisture management and wicking behaviour.

---



Fabrics with good wicking ability can help to keep the wearer feeling cool and dry by effectively transporting perspiration away from the body. WickView measures this movement to give an accurate indication of moisture management performance.



## KEY BENEFITS

### VERTICAL & HORIZONTAL TESTING

WickView can be rotated to test specimens both vertically and horizontally, to better replicate how clothes are worn on the body, or how nonwovens are deployed in real life. Traditional horizontal moisture management testers only replicate the part of the garment worn on the shoulder.

### INNOVATIVE TECHNOLOGY

High definition cameras are positioned on either side of the specimen to record the movement of the water.

### TESTWISE FOR WICKVIEW

TestWise for WickView shows the wicking process in detail, including live video capture of the test, wet region boundary comparison and video playback of how the moisture spreads.

### RANGE OF METRICS

A range of metrics can be calculated by TestWise, including Wetted Area, Maximum Wetted Area, Maximum Wetted Difference, Spreading Speed and Directional Spreading Speed.

### MEANINGFUL RESULTS REPORTING

Results can be presented visually or in graph format, and results templates can be applied to show the user information relevant to them. Multiple test specimens can be compared, including saved results from previous tests.

The way WickView calculates and records results is a truer representation of real life, in comparison to existing methods of testing. By examining the direction, shape, speed and actual wet area of fabric, WickView is accurately measuring how sweat is drawn away from a wearer's body.

### WATER DELIVERY SYSTEM

The water delivery system replicates sweat - wicking isn't forced but instead the fabric draws liquid from water delivery system, as a garment would draw sweat from skin.

### EASY TO MAINTAIN

WickView is easy to clean and maintain, to ensure accurate testing every time.

## DIMENSIONS

Dimensions (mm)	Weight
Height: 420*	40kg
Width: 870	
Depth: 430	*In horizontal position

## CONTACT US

email: [sales@james-heal.co.uk](mailto:sales@james-heal.co.uk)  
tel: +44 (0) 1422 366 355  
web: [www.james-heal.co.uk](http://www.james-heal.co.uk)