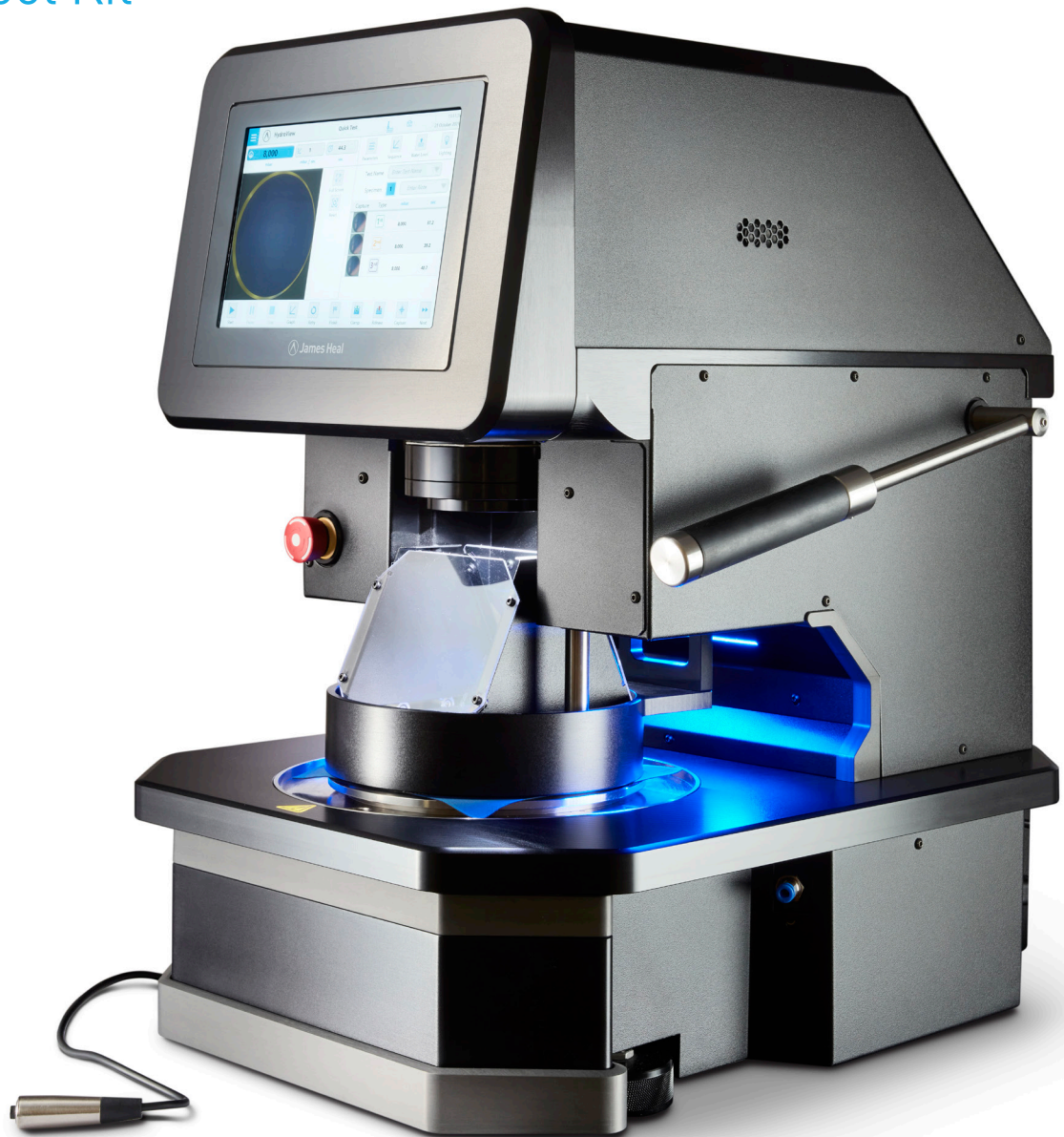


HydroView

Hydrostatic Head Tester

Sales Tool Kit



**PHYSICAL
PROPERTIES
TESTERS
GROUP**

www.jamesheal.com

MODEL NO: 2136 | STOCK CODE: 905-400

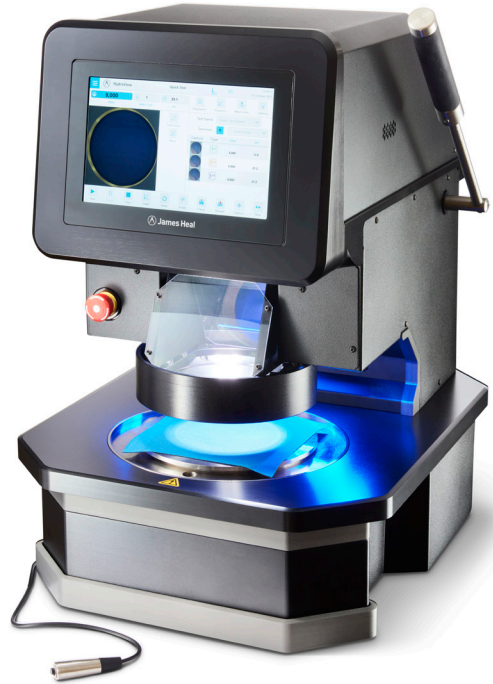


HydroView

Hydrostatic Head Tester

HydroView is a Hydrostatic Head Tester, used for determining the resistance of fabrics to the penetration of water. It is suitable for protective clothing, outdoorwear, nonwovens and geotextiles. HydroView is supplied with our intuitive TestWise software as standard.

MODEL NO: 2136 | STOCK CODE: 905-400



KEY BENEFITS

Testwise software

Our intuitive TestWise software, displayed on a 10" touchscreen, allows the user to choose from pre-loaded standards or create their own. It is easy to use and requires minimal training.

Integrated camera system

An integrated camera captures an image when the user detects a drop, this supports live and post-test analysis and is further enhanced by the zoom and mark features.

Vertical clamp system

Vertical clamping ensures an effective seal without distortion, even on thicker specimens. Important for accurate and repeatable testing.

Large test bed

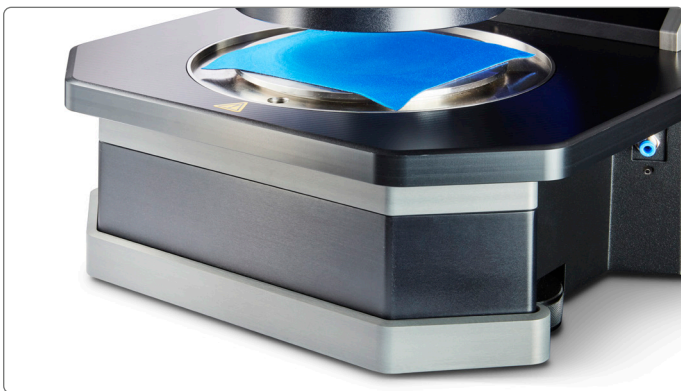
HydroView's large illuminated test bed accommodates both multi-layered fabrics and sheet substrates.

Pressure to suit a variety of tests

Ability to test across pressures from 0-10,000 mbar, making it suitable for testing even the most high-performance waterproof system.

Effective water management

An integrated pump automates the filling and emptying of the instrument for testing, and enables fine adjustment of water levels. The machine includes a wastewater drawer, removing the need for any additional plumbing which saves time and cost when conducting tests.





Roofing



Outdoorwear



Sportswear



Medical



Geotextiles



Nonwovens



Military



Fishing waders



Diving dry suits



Tenting

HydroView STANDARDS



AATTC 127
AATCC 208



EN ISO 811
EN ISO 9073-16



GB/T 4744



JIS L 1092



NONWOVENS STANDARD
PROCEDURES

ABOUT THE TEST

Hydrostatic pressure is the method for determining the resistance of fabrics to penetration by water. The method is applicable to all types of fabrics, which are intended to be water resistant, whether or not they have been given a water-resistant or water-repelled finish. Reference: ISO 811:2018.

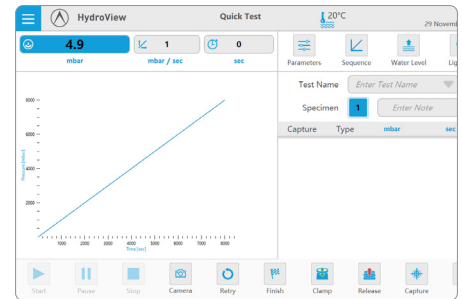
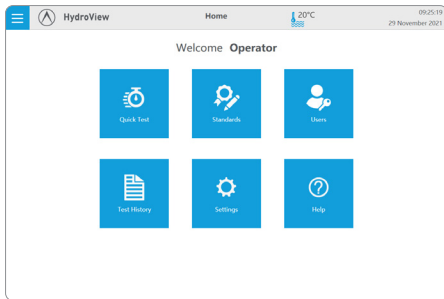
The result of the hydrostatic pressure test provides companies with a hydrostatic head result, which is used to market a wide variety of products and their resistance to water penetration or waterproof state.



HydroView AT A GLANCE



HydroView FEATURES AND BENEFITS



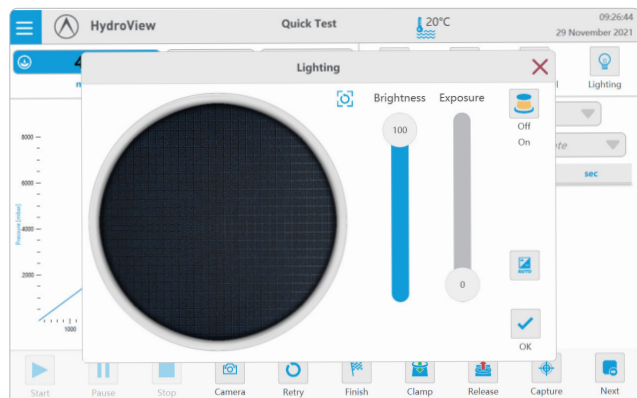
EASY TO USE TESTWISE SOFTWARE

We have developed our popular TestWise software for HydroView, housed in a 10" capacitive touchscreen that is clear and easy to read

STANDARDS

The software comes with pre-loaded standards which inputs the test parameters for the user, and a 'Quick Test' function to start testing quickly.

Users can also modify existing standards or create their own, giving them full flexibility.



SETTINGS

Multiple users can create their own profile for testing and their credentials will be featured on the test reports.

Volume, brightness, language and notifications can all be managed from the settings screen.

USER ALERTS

Alerts can be created to remind the user to return to the instrument to monitor a specimen at an expected failure point, these can be set at a specific pressure or time.

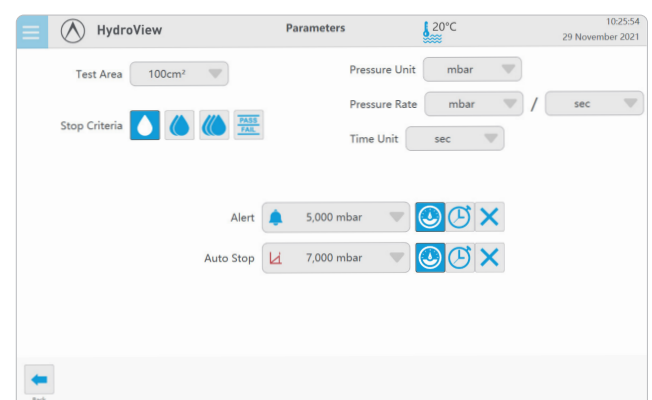
An auto stop can also be introduced so the test will automatically end at a time or pressure.

REPORTING

Test reports are easy to view and analyse on screen at the instrument. Users can look through their test history and re-visit stored tests.

The user can create custom reports, with field of their choosing.

Reports can also be exported to Excel or PDF, and moved onto a computer quickly by inserting a USB stick into the instrument.



HydroView **FEATURES AND BENEFITS**



INTEGRATED CAMERA SYSTEM

HydroView's integrated camera captures an image when the user detects a drop, this supports live and post-test analysis and is further enhanced by the zoom and mark features.

The test area remains visible to the user, even when the camera is in use.



VERTICAL CLAMP SYSTEM

An innovative safety guard arrangement enables users to hold the specimen in place without hands being near the pneumatic clamps when engaged for testing.



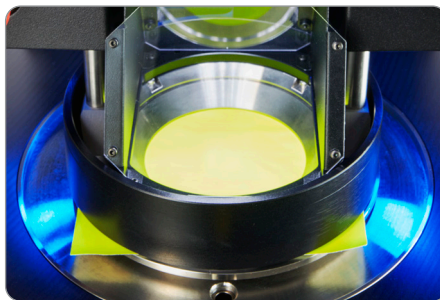
EFFECTIVE WATER MANAGEMENT

An integrated pump automates the filling and emptying of the instrument for testing, and enables fine adjustment of water levels. The machine includes a wastewater drawer, removing the need for any additional plumbing which saves time and cost when conducting tests.



PRESSURE TO SUIT A VARIETY OF TESTS

Ability to test across pressures from 0-10,000 mbar, making it suitable for testing even the most high performance waterproof system.

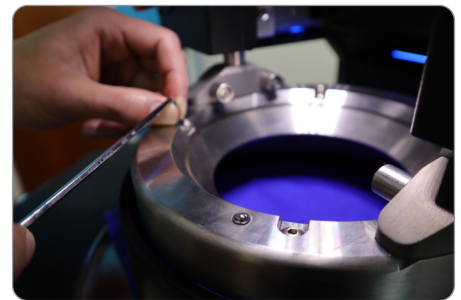


LARGE ILLUMINATED TEST BED

HydroView's illuminated test bed can accommodate both multi-layered fabrics and sheet substrates.

Moving between samples and taking them on and off the bed is easy to do.

The light can be adjusted during testing to support accurate detection of drops.



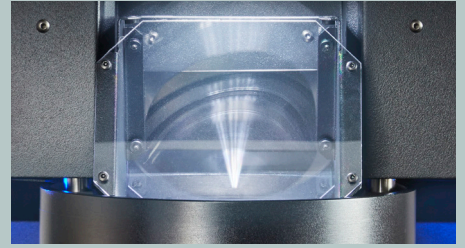
INTERCHANGEABLE TEST HEAD

The test head is interchangeable, adding versatility to a full range of standards.

HydroView **HOW TO PERFORM A TEST**

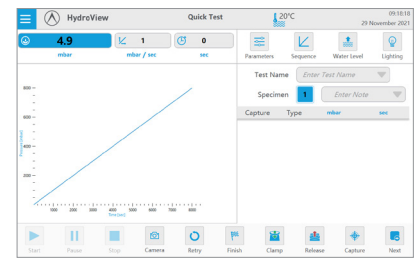
1

Ensure your instrument is full of water and the water is level with the o-rings on the lower head. Dry both your upper and lower clamp head and insert the specimen, ensure you don't trap any air under the specimen especially if it is not air permeable.



2

Set the test parameters. You can use pre-loaded standards or create your own.



3

Set the pressure gradient, which is determined by the standard. Lower safety clamp head onto the specimen. Press the clamp button to lower the pneumatic clamp into its lock position and when you are ready to test, press start.



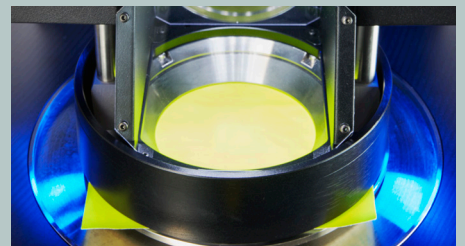
4

Wait for drops to form or if pressure is achieved to pass the test. Mark drops with hand switch.



5

Repeat the test 3-5 times depending on the standard. The mean value is then taken across the results for the final report.



HydroView TEST AREA AND STANDARDS

Specimen Type			Woven							Nonwovens		
Standards			EN ISO 811	EN 343	JIS L 1092	AATCC 127	AATCC 208	GB/T 4744	BS 2823	EN ISO 9073-16	NWSP 080.6R0	EDANA 120.1-80
Test Areas	Diameter (mm)	Test Areas										
100 cm²	112.84	794-365	●	●	●	●	●	●	●	●	●	
28.27cm²	60	794-366										●
26 cm²	57.54	794-367										
10 cm²	35.68	794-368										

Measuring Range: 0 – 10,000 mbar

Test pressure units: mbar, bar, mmH₂O, cmH₂O, inH₂O, Pa, hPa, kPa, psi

Rate: pressure unit / seconds, minutes, hours.

Measuring Accuracy: 0.1% +/- 3.5mm of indicated value

Test areas: 100cm², 26cm², 60mm diameter, 10cm²

- From clamp centre to rear: 176mm.
- Height at rear of guard: 106mm.
- Clearance of clamp mechanism: 38.5mm.

Data Ports: USB x 1

HydroView TEST AREAS CONVERSION

Test Areas [cm ²]	Test Areas [inch ²]	Diameter (mm)	Diameter (inch)
100	15.5	112.84	4.44
28.27	4.38	60	2.36
26	4.03	57.54	2.27
10	1.55	35.68	1.44

HydroView INSTRUMENT AND ACCESSORIES

Stock No:	Name:
905-400	2136 HydroView Hydrostatic Head Tester Standard Accessories 1 x Water Level Wiper 1 x Sample Plate 1 x Handheld Button Assembly 1 x Pneumatic Adaptor 5 x 6mm OD Soft Bylon Tube Blue 1 x Blue 'J' Cloth - per pack (50) 1 x Mains Lead Set Straight 1 x Splash Guard
794-365 794-366 794-367 794-368	HydroView Individual Accessories HydroView 100cm ² Sample Clamp Jaw Kit HydroView 60mm Diameter Sample Clamp Jaw Kit HydroView 26cm ² Sample Clamp Jaw Kit HydroView 10cm ² Sample Clamp Jaw Kit
2136 SPARES	HydroView 2-year Spares Kit 2 x Fuse 1A T 20x5mm O-Ring - Ø5 Section x Ø119 ID, Nitrile Rubber O-Ring - Ø5 Section x Ø132 ID, Nitrile Rubber O-Ring - Ø5 Section x Ø145 ID, Nitrile Rubber

YOU MAY BE INTERESTED IN...

AirPro

AirPro is a consistent and accurate Air Permeability tester, used to test the resistance of the flow of air through woven, knitted and non-woven textile materials. It is supplied with TestWise software, making it intuitive and easy to use.

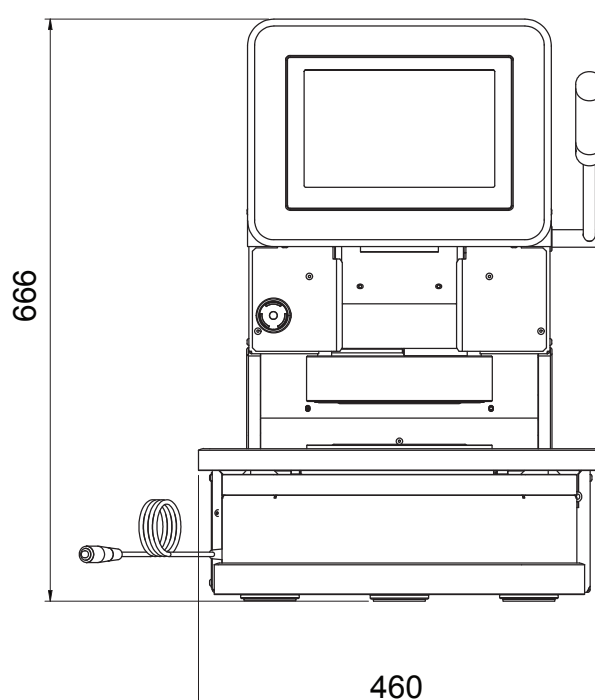
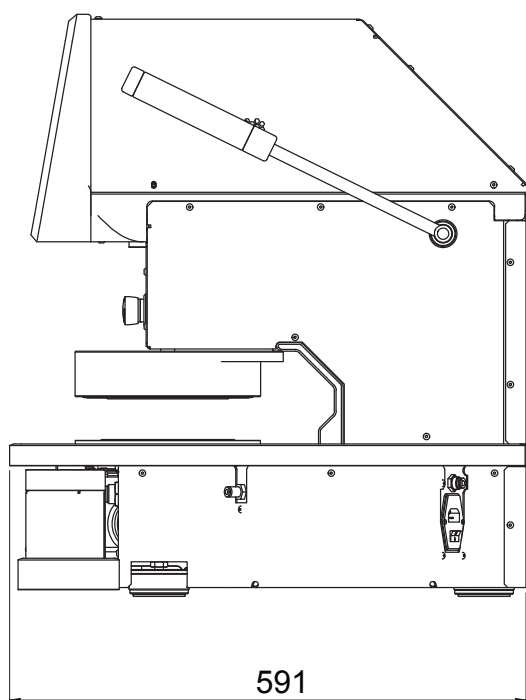
[Explore AirPro online](#)

jamesheal.com/performance



HydroView DIMENSIONS AND WEIGHT

Instrument Dimensions	Height (mm)	Width (mm)	Depth (mm)	Weight (kg)
HydroView	666	460	591	100



Item:	Comment:
Electricity	Voltage: 120-240V Frequency: 50/60Hz Current: 1A
Air	Required: Min 6 bar, max 10 bar
Bench or Floor Standing	Bench
Water Supply	ISO 3696 Grade 3 water required
Drainage	Not required
Air Extraction	Not required
Location	It is not recommended the instrument is located within a conditioned atmosphere
User Interface	10" Touch Display
Data Ports	USB for USB flash drive used to export test data and update software
Sample Thickness	0 to 10mm